



InsP5 2-kinase Polyclonal Antibody

Catalog No	YP-Ab-14789
Isotype	IgG
Reactivity	Human;Mouse;Rat
Applications	WB;IHC;IF;ELISA
Gene Name	IPPK
Protein Name	Inositol-pentakisphosphate 2-kinase
Immunogen	The antiserum was produced against synthesized peptide derived from human IPPK. AA range:11-60
Specificity	InsP5 2-kinase Polyclonal Antibody detects endogenous levels of InsP5 2-kinase protein.
Formulation	Liquid in PBS containing 50% glycerol, 0.5% BSA and 0.02% sodium azide.
Source	Polyclonal, Rabbit,IgG
Purification	The antibody was affinity-purified from rabbit antiserum by affinity-chromatography using epitope-specific immunogen.
Dilution	Western Blot: 1/500 - 1/2000. Immunohistochemistry: 1/100 - 1/300. Immunofluorescence: 1/200 - 1/1000. ELISA: 1/10000. Not yet tested in other applications.
Concentration	1 mg/ml
Purity	≥90%
Storage Stability	-20°C/1 year
Synonyms	IPPK; C9orf12; Inositol-pentakisphosphate 2-kinase; IPK1 homolog; Inositol-1; 3,4,5,6-pentakisphosphate 2-kinase; Ins(1,3,4,5,6)P5 2-kinase; InsP5 2-kinase
Observed Band	56kD
Cell Pathway	Cytoplasm . Nucleus .
Tissue Specificity	Ubiquitously expressed, with high expression in heart, brain, testis and placenta.
Function	catalytic activity:ATP + 1D-myo-inositol 1,3,4,5,6-pentakisphosphate = ADP + 1D-myo-inositol hexakisphosphate.,domain:The EXKPK motif is conserved in inositol-pentakisphosphate 2-kinases of both family 1 and 2.,function:Phosphorylates Ins(1,3,4,5,6)P5 at position 2 to form Ins(1,2,3,4,5,6)P6 (InsP6 or phytate). InsP6 is involved in many processes such as mRNA export, non-homologous end-joining, endocytosis, ion channel regulation. It also protects cells from TNF-alpha-induced apoptosis.,similarity:Belongs to the IPK1 type 2 family.,tissue specificity:Ubiquitously expressed, with high expression in heart, brain, testis and placenta.,
Background	The protein encoded by this gene is a kinase that phosphorylates position 2 of inositol-1,3,4,5,6-pentakisphosphate to form



inositol-1,2,3,4,5,6-hexakisphosphate (InsP6). InsP6 has a variety of functions, including stimulation of DNA repair, endocytosis, and mRNA export. [provided by RefSeq, Nov 2010],

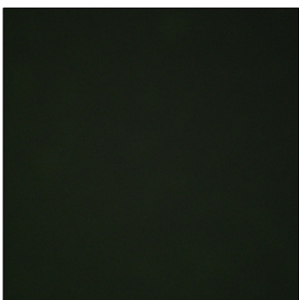
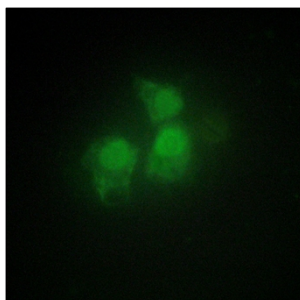
matters needing attention

Avoid repeated freezing and thawing!

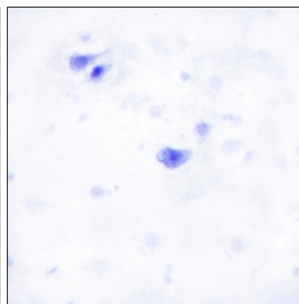
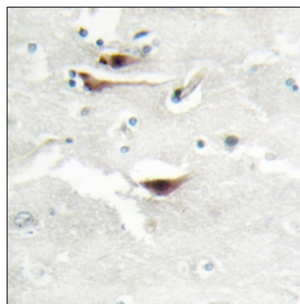
Usage suggestions

This product can be used in immunological reaction related experiments. For more information, please consult technical personnel.

Products Images



Immunofluorescence analysis of HepG2 cells, using IPPK Antibody. The picture on the right is blocked with the synthesized peptide.



Immunohistochemistry analysis of paraffin-embedded human brain tissue, using IPPK Antibody. The picture on the right is blocked with the synthesized peptide.